



## BTC Group

Email: [victam-viv-asia@btccgroup.nl](mailto:victam-viv-asia@btccgroup.nl)

Tel. direct: +31 657 99 62 82

## Reservation:

**We prefer that you make the reservation online at**  
**[Official hotel booking site](#)**

## The Netherlands, September 26, 2019

VICTAM and Animal Health and Nutrition Asia 2020, by VICTAM & VIV and BTC Group join hands in making your visit to VICTAM and Animal Health and Nutrition Asia 2020, by VICTAM & VIV truly hassle free.

The event takes place in Bangkok, March 24-26, 2020. For your hotel reservations, please see below the selected Official VICTAM and Animal Health and Nutrition Asia 2020, by VICTAM & VIV hotels.

The online individual room reservation system can be reached via [TBC](#). For groups see next page.

**Please be aware that to compare the below hotel rates with the internet prices, the VICTAM and Animal Health and Nutrition Asia 2020, by VICTAM & VIV rates:**

- **Include all actual taxes**
- **Include the actual local tourist tax**
- **Include your breakfast**
- **Include free WiFi-internet**
- **Are based on individual bookings (Group booking on request, see below)**

Hotel name	Star Rating	Rate single room from	BTS Station/ distance	Stations (st) to BITEC	Website
Ibis Bangkok Sukhumvit 4	3*	THB 1.700	Nana 500 mtr	10 st	<a href="#">Ibis Sukhumvit 4</a>
Ibis Bangkok Sukhumvit 24	3*	THB 1.850	Phrom Phong 100 mtr	8 st	<a href="#">Ibis Sukhumvit 24</a>
Ibis Style Sukhumvit 4	3*	THB 2.300	Nana 350 mtr	10 st	<a href="#">Ibis Style Sukhumvit 4</a>
Galleria 10	4*	THB 2.500	Asok 550 mtr	9 st	<a href="#">Galleria Sukhumvit 10</a>
Mercure Sukhumvit 24	4*	THB 2.750	Phrom Phong 100 mtr	8 st	<a href="#">Mercure Sukhumvit 24</a>
Holiday Inn Express Siam	3,5*	THB 3.000	Nat.Stadium 200 mtr	1+13 st	<a href="#">HI Express Siam</a>
Novotel Sukhumvit 20	4*	THB 3.100	Asok 600 mtr	9 st	<a href="#">Novotel Sukhumvit 20</a>
Windsor Suites & Convention	4*	THB 3.100	Asok 550 mtr	9 st	<a href="#">Windsor Sukhumvit 20</a>
Avani Sukhumvit Bangkok	4*	THB 3.200	Onut 50 mtr.	4 st	<a href="#">Avani Sukhumvit 81</a>
Column Hotel Bangkok	4*	THB 3.350	Asok 550 mtr.	9 st	<a href="#">Column Sukhumvit 16n</a>
Novotel Sukhumvit 4	4*	THB 3.350	Nana 350 mtr	10 st	<a href="#">Novotel Sukhumvit 4</a>
Novotel on Siam Square	4*	THB 3.400	Siam 180 mtr	13 st.	<a href="#">Novotel Siam Square</a>
Verve Bangkok	4*	THB 3.500	ThongLo 300 mtr	7 st	<a href="#">Verve Sukhumvit 55</a>
DoubleTree Ploenchit	4*	THB 3.500	Ploenchit 500 mtr	11 st	<a href="#">DoubleTree Ploenchit</a>
Adelphi Suites Bangkok	4*	THB 3.550	Nana 300 mtr	10 st	<a href="#">Adelphi Suites Sukh 8</a>
Grand Sukhumvit by Accor	4,5*	THB 3.700	Nana 150 mtr	10 st	<a href="#">Grand Sukhumvit 6</a>
Continent Bangkok Hotel	5*	THB 3.900	Asok 150 mtr	9 st	<a href="#">The Continent Sukh 21</a>
Compass Skyview Hotel	5*	THB 4.180	Phrom Phong 100 mtr	8 st	<a href="#">Compass Sukhumvit 24</a>
Hilton Sukhumvit	5*	THB 4.500	Phrom Phong 100 mtr	8 st	<a href="#">Hilton Sukhumvit 24</a>
Pullman Grand Sukhumvit	5*	THB 4.950	Asok 300 mtr	9 st	<a href="#">Pullman Sukhumvit 21</a>
Landmark Bangkok	5*	THB 5.179	Nana 150 mtr	10 st	<a href="#">Landmark Bangkok</a>
Marriott Marquis Queen's Park	5*	THB 5.200	Phrom Phong 350 mtr	8 st	<a href="#">Marriott Marquis Suk22</a>
Renaissance Ratchaprasong	5*	THB 5.300	ChitLom 160 mtr	12 st	<a href="#">Renaissance Ratchp</a>
Hyatt Regency	5*	THB 5.500	Nana 190 mtr	10 st	<a href="#">Hyatt Sukhumvit 13</a>
JW Marriott	5*	THB 6.355	Ploenchit 450 mtr	11 st	<a href="#">JW Marriott Bangkok</a>



### **Group bookings.**

For group booking requests please send an email to [VICTAM-VIV-groups@btccgroup.nl](mailto:VICTAM-VIV-groups@btccgroup.nl) and mention:

- 1-3 preferred hotels
- Number of expected rooms you need
- Average dates you need the rooms

We will pick this up with the hotels and we will get back with a proposal to you. Then we will bring you in contact with the hotel and you deal then direct with the hotel. We are in the 'back-ground' for assistance and help.

### **General notes:**

Please be aware that:

- any change in government fees or taxes will be reflected in the final invoice
- official hotel check-in time is 15:00hrs, check out time is 12:00hrs.
- the official hotel terms and conditions apply

We prefer that you book online.

### **ATTENTION:**

- FOR TRIPS TO SEVERAL COUNTRIES IN ASIA AND MIDDLE EAST YOU ARE REQUIRED TO HAVE A VISA.
- KEEP IN MIND THAT YOUR PASSPORT SHOULD BE VALID FOR **ANOTHER 6 MONTHS AFTER DEPARTURE** FROM THE TO BE VISITED COUNTRY
- CHECK YOUR VACCINATIONS IN TIME!!
- KINDLY NOTE THAT CERTAIN TOURS SUCH AS DESERT SAFARI SHOULD NOT BE UNDERTAKEN BY ANYONE WITH A MEDICAL CONDITION SUCH AS WEAK HEART, BACK PROBLEMS, ETC. ALSO PREGNANT WOMEN AND SENIORS OVER 70 YEARS SHOULD CHOOSE OTHER EXCURSIONS

### **Note:**

- Room rates are including actual tax and service charge
- Rates quoted will be charged by the hotel in Thai Bath

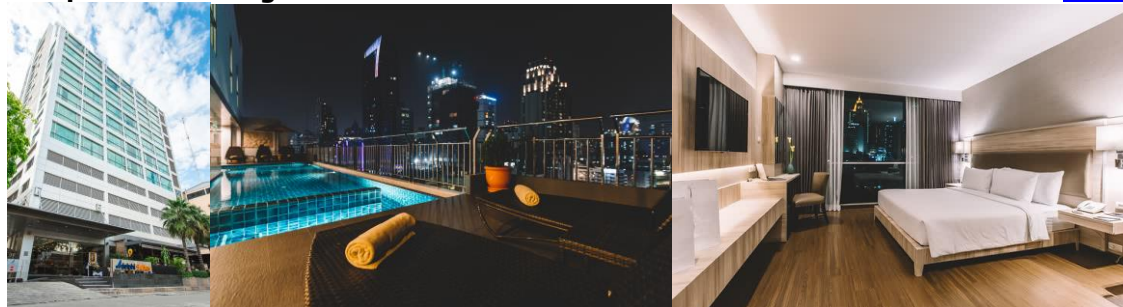
### **General Terms and Conditions (details may vary per hotel)**

- **Payment Policy**
  - For individual reservation, guest to pay direct to hotel with credit card guarantee of one night room charge. Credit card provided is for guaranteed only and shall only be charged in case of cancellation or no show as per agreed policy
  - Reservations are subject to room availability
- **Cancellation Policy**
  - Room Cancellation 7 days prior to arrival date, there is no penalty charge.
  - Room Cancellation between arrival date and 7 days prior to arrival, a penalty of equivalent to two (2) night room charge will apply
- **No show policy**
  - No show means failure to arrive at hotel on the day booked for arrival.
  - Hotel to hold reservation until 24.00 hrs. of the day booked for arrival. For late night arrival with arrival flight information given to hotel, room will be kept three hours after flight landing time.
  - If guest has not informed hotel of the change on arrival date, hotel can release booking and apply 1 night room charge penalty.
  - If guest arrives at a subsequent date, then guest will not be refunded for the date between scheduled and actual arrival

### **Hospitality form VICTAM and Animal Health and Nutrition Asia 2020, by VICTAM & VIV (2 from 11)**

BTC Group, Kerklaan 9, 3941 HT Doorn. Tel. +31.6 5799 6282, mail [info@btccgroup.nl](mailto:info@btccgroup.nl), web [www.btccgroup.nl](http://www.btccgroup.nl), KvK (Chamber of Commerce) 30242945 Bankaccount number 1442.41.226 (IBAN NL68RABO0144241226, BIC RABONL24), Taxnumber NL0435.91.176

**Adelphi Suites Bangkok 4\* THB 3.550 Nana 300 mtr [Web Adelphi Suites](#)**



Adelphi Suites Residence Hotel & Serviced Apartment is located in the heart of Bangkok, on Sukhumvit soi 8, with easy access the Nana BTS Train Station. There is plenty of restaurants in the area, catering to all ethnicities and tastes, ranging from a casual affordable meal to fine-dining and a vibrant nightlife. We provide top-of-the-line facilities and services second to none. Adelphi Suites, provides all the amenities you could possibly need for a comfortable home away from home. Whether your stay is short or long, we guarantee it will be a memorable one.

**Avani Sukhumvit Bangkok 4\* THB 3.500 Onut 50 mtr [Web Avani Sukhumvit](#)**



The new build Avani Bangkok Sukhumvit hotel features 382 rooms in signature Avani style- contemporary, sunlit and showcasing wow views of Bangkok's soaring skyline. Swim and chill above the cityscape. Hideaway in the sanctuary AVANISPA. Discover up-and-coming On Nut's many cafes, art galleries and street eats. The hotel is direct connected to BTS Onnut station and is only 5 stations away from BITEC Exhibition Center. Each room or suite overlooks the skyline, and features cooling tones of charcoal, wood and gold. Spacious and sunlit, convenience is maximized and high-tech entertainment. Step into your marble walk-in shower and cool off after a long day spent exploring.

**Column Bangkok Hotel 4\* THB 3.350 Asok 550 mtr. [Web Column](#)**



Column Bangkok Hotel, a luxurious 4 stars accommodation in the heart of Bangkok. Centrally located in Bangkok's main business, entertainment district, and shopping at your doorstep. Located opposite to Benjakitti Park, Column Bangkok Hotel overlooks the city's largest lake and has one greatest views of the Bangkok Skyline. We provide an unbeatable level of our accommodation, service and amenities.

Y SPA as a new wellness experience in Bangkok - Bathhouse and Thai spa treatments. Enjoy relaxing and therapeutic qualities of hot springs Take a pick from 5 varying degrees of heat or ice cool pool. Additional; Complex bring your fitness regimen with an array of resistance machines and cardiovascular equipment. You'll be glad to know that we have made sure that the utmost has been done for environmental protection.

**Hospitality form VICTAM and Animal Health and Nutrition Asia 2020, by VICTAM & VIV (3 from 11)**



### Compass Skyview Hotel

5\*

THB 4.180

PhromPhong 100 mtr

[Web Compass](#)



Located in the heart of Bangkok's prime shopping and entertainment area on Sukhumvit Soi 24, next to Emporium Shopping Centre and close to the BTS Station, Compass SkyView Hotel Bangkok is a great choice for discerning travelers. The hotel offers modern, clean and comfortable rooms and suites suitable for short and long term stays, exquisite lounges and bars, the first night club in the sky, an outdoor swimming pool, a helipad and a pillarless Grand Ballroom with complete natural light. As a guest at Compass SkyView Hotel Bangkok, you'll enjoy free WiFi both in your room as well as in all public areas of the hotel. And with such a prime location, all the city's favorite hotspots are within a short walk or Skytrain ride away!

### The Continent Bangkok Hotel 5\* THB 3.900

Asok 150 mtr

[Web The Continent](#)



The Continent Hotel, Bangkok, a Michelin Guide Bangkok listed hotel is a 39 storey lifestyle and boutique glass tower in the heart of Bangkok. Located directly at Asoke, with adjacent BTS and MRT connectivity. Well-appointed guestrooms with top to bottom glass windows offer expansive views of the city skyline. Diverse Dining and private dining venues range from a roof top modern Thai Restaurant and Bar (Bangkok Heightz, 39th Floor), an Italian inspired restaurant (Medinii, 35th Floor), a speak easy lounge on the 38th Floor (Axis & Spin) and a pool bar (H2O, 37th Floor). The top floors offers sweeping views of the city skyline.

### DoubleTree Ploenchit

4\*

THB 3.500

Ploenchit 500 mtr

[Web DoubleTree](#)



Welcome to DoubleTree by Hilton Bangkok Ploenchit, conveniently located in the heart of vibrant Bangkok. The hotel is a short walk from the Ploenchit and Nana BTS train station, offering easy access to vibrant street life and cultural landmarks, businesses, shopping like Terminal 21, EmQuartier, Siam Paragon. Unwind in a comfortable guest room or suite with views over Bangkok. Thoughtful amenities include working desk, built-in universal USB-enabled plug points, minibar, fridge and in-room safe.

Savor local and international favorites at OPEN}, all-day-dining restaurant or relax with a drink at OPEN} Bar. Enjoy amenities, including a well-equipped fitness center with weights and cardio machines, as well as an outdoor pool. Our friendly team looks forward to welcoming you with our signature, warm chocolate-chip cookie upon arrival.

## Hospitality form VICTAM and Animal Health and Nutrition Asia 2020, by VICTAM & VIV (4 from 11)

BTC Group, Kerklaan 9, 3941 HT Doorn. Tel. +31.6 5799 6282, mail [info@btccgroup.nl](mailto:info@btccgroup.nl), web [www.btccgroup.nl](http://www.btccgroup.nl),  
KvK (Chamber of Commerce) 30242945 Bankaccount number 1442.41.226 (IBAN NL68RABO0144241226, BIC RABONL24), Taxnumber NL0435.91.176

**Galleria 10 Hotel Bangkok 4\***

**THB 2.500**

**Asok 550 mtr**

[Web Galleria 10](#)



Galleria 10 Hotel (4 star hotel) is located on Sukhumvit Soi 10, near the Nana BTS station; the hotel is located in the heart of Bangkok's primary business, entertainment, and shopping district. Some examples being the Terminal 21 and Korean Town, the hotel is also very close to the bustling Sukhumvit Soi 11. The Galleria 10 Hotel offers 188 guestrooms with all the essential amenities include innovative bars, a lofty restaurant, a meeting space, a gym, and an elevated swimming pool

**Grand Sukhumvit by Accor 4\***

**THB 3.700**

**Nana 150 mtr**

[Web Grand Sukhumvit](#)



Grand Sukhumvit Hotel Bangkok Managed by Accor is within walking distance to Nana BTS sky train station, and offers easy access to Terminal 21, Bumrungrad International Hospital and the non-stop entertainment in Bangkok, Siam Paragon, Central World shopping centre, and MBK Center are all within easy reach via the BTS sky train Network. Within 45 minutes the elevated highway will take you from Suvarnabhumi International Airport or even less by Airport Rail Link that connects to BTS sky train

**Hilton Sukhumvit 24 5\***

**THB 4.500**

**Phrom Phong 100 mtr**

[Web Hilton](#)



Hilton Sukhumvit Bangkok is a 1-minute walk from the Em District and Emporium Department Store. It offers modern air-conditioned rooms with a bathtub. This luxurious hotel is equipped with a rooftop pool, fitness center and tour desk. Each room is fitted with contemporary décor. It comes with a flat-screen cable TV, safety deposit box and mini-bar. Free toiletries and hairdryer are included in an private bathroom. Slippers and bathrobes are provided. The hotel features a 24-hour front desk, business center and meeting facilities. Other services include currency exchange and laundry. Guests can enjoy Italian cuisine at award-winning Scalini Restaurant, Asian and Mediterranean cuisines at Mondo Restaurant, or sip a glass of cocktail at Lapse Pool Bar.

**Hospitality form VICTAM and Animal Health and Nutrition Asia 2020, by VICTAM & VIV (5 from 11)**

BTC Group, Kerklaan 9, 3941 HT Doorn. Tel. +31.6 5799 6282, mail info@btccgroup.nl, web www.btccgroup.nl,  
 KvK (Chamber of Commerce) 30242945 Bankaccount number 1442.41.226 (IBAN NL68RABO0144241226, BIC RABONL24), Taxnumber NL0435.91.176

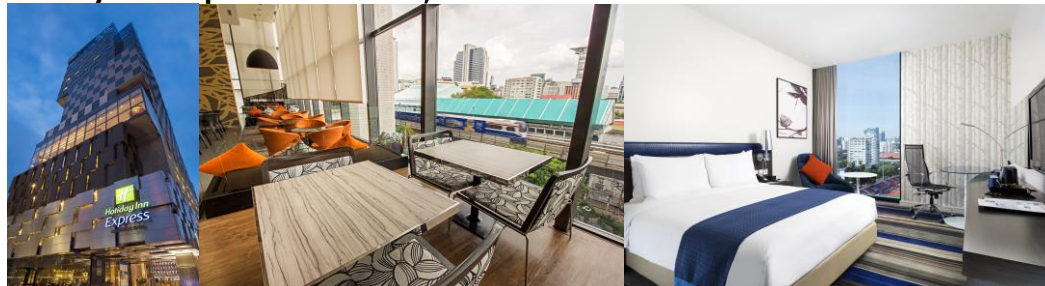




### **Holiday Inn Express Siam 3,5\* THB 3.000**

**Nat.Stadium 200 mtr**

[Web HI Express Siam](#)



A smart hotel in the center of Bangkok's famous Siam shopping district with spectacular views of the National Stadium and Bangkok city. Located in the heart of Siam, Holiday Inn Express Bangkok Siam is a few minutes walking distance from mega shopping malls like MBK, Siam Paragon, Central World, Platinum and Siam Discovery

### **Hyatt Regency**

**5\* THB 5.500**

**Nana 190 mtr**

[Web Hyatt Regency](#)



Stay at the Newest Five-star Hotel in Sukhumvit - Bangkok

Hyatt Regency Bangkok Sukhumvit will be a vibrant place for guests to share, socialize and collaborate. Conveniently located on Sukhumvit road with direct access to BTS skytrain Nana Station, the hotel offers full facilities and amenities such as a fitness center, swimming pool, outdoor spaces and Regency Club Lounge to provide energizing experiences for guests visiting Bangkok, whether for business or leisure. Free wireless internet is available, allowing all registered guests to stay connected. Enjoy the distinguished dining experiences including our Market Café.

And don't forget to visit city famous roof top bar and restaurant Spectrum Level 29 (At night time (5:30 PM onwards) the venue is tuned up as a Music Lounge with options for guests to drink and dine at the bar, living room, private room, chef's table, or outdoor veranda featuring live jazz music) and Spectrum Level 30.

At nightfall, Spectrum Lounge & Bar is Bangkok's most energizing rooftop bar with live DJ.

### **IBIS Bangkok Sukhumvit 4 3\* THB 1.700**

**Nana 500 mtr.**

[Web Ibis Sukhumvit](#)



Ibis Bangkok Sukhumvit 4's prime location puts you in the middle of the city's action, located within minutes from the skytrain, shopping, dining and entertainment attractions on the Sukhumvit Road. Shopping malls, bars, restaurants, public transport, all just minutes away. Friendly staffs, great services, a colourful atmosphere - find it all at Ibis Bangkok Sukhumvit 4

## **Hospitality form VICTAM and Animal Health and Nutrition Asia 2020, by VICTAM & VIV (6 from 11)**

BTC Group, Kerklaan 9, 3941 HT Doorn. Tel. +31.6 5799 6282, mail [info@btccgroup.nl](mailto:info@btccgroup.nl), web [www.btccgroup.nl](http://www.btccgroup.nl), KvK (Chamber of Commerce) 30242945 Bankaccount number 1442.41.226 (IBAN NL68RABO0144241226, BIC RABONL24), Taxnumber NL0435.91.176

**IBIS Style Sukhumvit 4**

**3\***

**THB 2.300**

**Nana 350 mtr.**

[Web Ibis Style Sukh. 4](http://www.ibisstyle.com/TH/en/properties/ibis-style-bangkok-sukhumvit-4)



Located just a 5-minute walk from BTS Nana Skytrain Station, ibis Styles Bangkok Sukhumvit 4 boasts an outdoor swimming pool, a fitness center and a rooftop bar overlooking stunning Bangkok's city view. The hotel is located in close proximity to various bars, restaurants and shopping malls including MBK, Siam Paragon, The EmQuartier and Terminal 21. All guest rooms at the hotel are fitted with a seating area, a flat-screen TV with satellite channels and a private bathroom. At ibis Styles Bangkok Sukhumvit 4 you will find a restaurant serving European and Asian cuisine. Red Square Rooftop Bar on the 24th floor is where guests can enjoy tasty drinks and snacks.

**IBIS Bangkok Sukhumvit 24**

**3\***

**THB 1.850**

**PhromPhong 100 mtr.**

[Web Ibis Sukhumvit 24](http://www.ibis.com/TH/en/properties/ibis-bangkok-sukhumvit-24)



Opening in December 2019, Ibis Bangkok Sukhumvit 24 is designed for your comfort and convenience. You are close to fabulous shopping malls such as Emporium, Emquartier, Terminal 21 and Peaceful Benjakitti Park. Just 100 meters from the convenience of the BTS SkyTrain Phrom Phong station. Start your day with a tasty breakfast at The Market Restaurant. Guests are welcome to dine at the popular all-day dining restaurant in our sister property, Mercure Bangkok Sukhumvit 24. Something worrying you about your stay? Smile Team to the rescue: we're on hand 24/7 to make you smile again in 15 minutes flat!

**JW Marriott**

**5\***

**THB 6.355**

**Ploenchit 450 mtr**

[Web JW Marriott](http://www.jwmarriott.com/TH/en/properties/jw-marriott-bangkok)



Comfortably furnished, elegant rooms at JW Marriott Hotel Bangkok Luxury & Lifestyle Hotel, feature a flat-screen TV and soundproof walls. Located on Sukhumvit 2, it is just a 5-minute walk from Ploenchit and Nana BTS Skytrain stations. This luxurious city retreat offers a pampering spa and an outdoor pool. Stylish and modern rooms feature wide windows overlooking the Bangkok City. We are 0.9 mi from Central World Plaza and 1.5 mi away from the popular MBK Shopping Mall and Siam Paragon Shopping Center. Guests can work out in the fitness center or relax in the sauna.

JW Marriott Bangkok has 8 dining options including Man Ho Chinese Restaurant and Nami Teppanyaki Steakhouse. Manhattan Bar offers a wide range of cocktails and a wine list, while Bangkok Baking Company satisfies guests with delectable baked goods, cakes and pastry.

**Hospitality form VICTAM and Animal Health and Nutrition Asia 2020, by VICTAM & VIV (7 from 11)**

BTC Group, Kerklaan 9, 3941 HT Doorn. Tel. +31.6 5799 6282, mail [info@btccgroup.nl](mailto:info@btccgroup.nl), web [www.btccgroup.nl](http://www.btccgroup.nl),  
 KvK (Chamber of Commerce) 30242945 Bankaccount number 1442.41.226 (IBAN NL68RABO0144241226, BIC RABONL24), Taxnumber NL0435.91.176



**Landmark 5\* THB 5.179 Nana 150 mtr** [Web Landmark Bangkok](#)



With the **Nana BTS Skytrain Station** at its doorstep, The Landmark offers accommodations with Bangkok City views. It features 9 dining options and a 4-story shopping arcade. Free WiFi is available in public areas. Equipped with internet access, modern air-conditioned rooms at Landmark Bangkok feature large windows and a TV with satellite channels. A mini-bar and a safety deposit box are included, along with 24-hour room service. A wide array of dining options can be found at Landmark including Rib Room & Bar Steakhouse that serves gourmet steaks and French cuisines with an outstanding wine list. Asian delights can be found at Sui Sian and other international cuisines at Atrium. Refreshments and quick meals can be enjoyed at the 24-hour bistro Greenhouse and the Landmark Bakery & Cafe. Guests can also sit back and relax with a refreshing drink at Rendezvous Bar and the Huntsman Pub. Guests can exercise in the fitness center, swim in the outdoor pool or play a game of squash. The Landmark Bangkok's business center opens 06:00-24:00 hrs.

**Marriott Marquis Queen's Park 5\* THB 5.200 PhromPhong 350 mtr** [Web Marriott Marquis](#)



Bangkok Marriott Marquis Queen's Park blends legendary Thai hospitality with the "Travel Brilliantly" philosophy of the Marriott brand. Located along Sukhumvit Road in downtown Bangkok, surrounded by the city's most vibrant shopping, business and entertainment districts, the iconic Bangkok Marriott Marquis Queen's Park boasts 1,388 rooms and suites. Close proximity to Phrom Phong's BTS Skytrain Station, as well as the lifestyle malls of the EM District, provide easy access to some of the city's most talked-about hot spots

**Mercure Sukhumvit 24 4\* THB 2.750 PhromPhong 100 mtr** [Web Mercure Sukh. 24](#)



Mercure Bangkok Sukhumvit 24 is located right off BTS Skytrain Phrom Phong station, only 100 meters from the hotel. A few steps from fabulous malls Emporium, Emquartier and 1 station away from Terminal 21, providing quick and easy access to all this exciting city has to offer. The hotel features 201 rooms and suites, an all-day dining restaurant, rooftop swimming pool, fitness center, all complemented by warm friendly service.

**Hospitality form VICTAM and Animal Health and Nutrition Asia 2020, by VICTAM & VIV (8 from 11)**

BTC Group, Kerklaan 9, 3941 HT Doorn. Tel. +31.6 5799 6282, mail info@btcgroup.nl, web www.btcgroup.nl,  
 KvK (Chamber of Commerce) 30242945 Bankaccount number 1442.41.226 (IBAN NL68RABO0144241226, BIC RABONL24), Taxnumber NL0435.91.176





#### Novotel on Siam Square

4\*

THB 3.400

Siam 180 mtr

[Web Novotel Siam](#)



Novotel Bangkok on Siam Square is ideally located in the heart of downtown Bangkok. Our hotel is surrounded by premier shopping destinations like Siam Paragon, Central World and MBK, as well as street-side vendors and dozens of great restaurants. Make your way around Bangkok with ease via the BTS Sky train. Experience the culture of Bangkok as our hotel is at walking distance from the Erawan Shrine (Four-Faced Buddha), Jim Thompson House and the Bangkok Arts and Cultural Centre.

#### Novotel Sukhumvit 4

4\*

THB 3.350

Nana 350 mtr

[Web Novotel Sukhumvit 4](#)



Novotel Bangkok Sukhumvit 4 is located in the heart of the bustling business and entertainment district in Bangkok. Only a short walk from the Nana BTS SkyTrain station, it is ideal for both business and leisure. The hotel features 185 rooms, a contemporary restaurant, swimming pool, fitness centre and Rooftop Bar with stunning 270 degree views of Bangkok. The hotel is located in close proximity to various bars, restaurants and shopping malls including MBK, Siam Paragon, The EmQuartier and Terminal 21. All guest rooms at the hotel are fitted with a seating area, a flat-screen TV with satellite channels and a private bathroom with free toiletries and a shower. The hotel offers certain units with city views, and the rooms are fitted with a kettle. The rooms feature a desk. The accommodations offers a continental or buffet breakfast. At Novotel Bangkok Sukhumvit 4 you will find a restaurant serving European and Asian cuisine. Red Square Rooftop Bar on the 24th floor is where guests can enjoy tasty drinks and snacks.

#### Novotel Sukhumvit 20

4\*

THB 3.100

Asok 600 mtr

[Web Novotel Sukh 20](#)



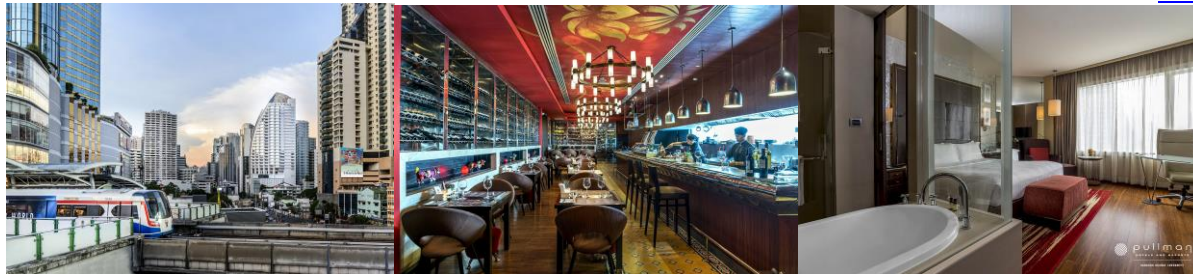
An ideally hotel on Sukhumvit, offering a welcome and spacious stay in Thai modern 244 rooms and suites with city view along with desire amenities for your fully best stay. Easy access by public transportation BTS Asok and MRT Sukhumvit or experience our complimentary Tuk Tuk service. Additionally, enjoy benefit at Executive Sky Lounge including fitness, infinity pool and kids club. Variety dinner and entertainment options from café to the top with our award winning rooftop sky bar.

### Hospitality form VICTAM and Animal Health and Nutrition Asia 2020, by VICTAM & VIV (9 from 11)

BTC Group, Kerklaan 9, 3941 HT Doorn. Tel. +31.6 5799 6282, mail [info@btccgroup.nl](mailto:info@btccgroup.nl), web [www.btccgroup.nl](http://www.btccgroup.nl), KvK (Chamber of Commerce) 30242945 Bankaccount number 1442.41.226 (IBAN NL68RABO0144241226, BIC RABONL24), Taxnumber NL0435.91.176



**Pullman Grand Sukhumvit 5\* THB 4.950 Asok 300 mtr** [Web Pullman](#)



Conveniently located right in the heart of Sukhumvit, the most vibrant and fascinating business and shopping area in Bangkok. The hotel sits next to the Asok BTS Sky train and Sukhumvit MRT stations providing easy access to attractions and sights in the City of Angels.

Nearby attractions include Terminal 21, The Emporium, dining options, and entertainment night life. Pullman Bangkok Grande Sukhumvit features 325 spacious guest rooms, every room has bath tub and separate shower as well as free Wi-Fi internet access.

3 Restaurants and bar, 16 meeting rooms, in-door parking space spa and fitness center. Whether you're travelling for business or pleasure, Pullman Bangkok Grande Sukhumvit suites all desires.

**Renaissance Ratchaprasong 5\* THB 5.300 ChitLom 160 mtr** [Web Renaissance](#)



Towering over central Bangkok, 5-Star luxury in elegant rooms just 160 m. from Chidlom Sky train Station. It houses a first-rate spa, fitness facilities and 4 dining options.

Find a new way to stay, work and play amidst the palpable energy of downtown Bangkok at Renaissance Bangkok Ratchaprasong Hotel.

Feed your curiosity for new tastes with authentic Chinese delicacies, fresh, seasonal Italian dishes and tapas at our hotel restaurants. Revive at the fitness center with indoor pool or replenish at our full-service spa.

All accommodations include pillow-top bedding, spa-like bathrooms, free Wi-Fi and views of Bangkok's colorful city center through oversized windows. Merging intriguing design elements and a locally inspired décor, our 5-star hotel has everything you need to make Bangkok your own.

**Hospitality form VICTAM and Animal Health and Nutrition Asia 2020, by VICTAM & VIV (10 from 11)**

BTC Group, Kerklaan 9, 3941 HT Doorn. Tel. +31.6 5799 6282, mail [info@btccgroup.nl](mailto:info@btccgroup.nl), web [www.btccgroup.nl](http://www.btccgroup.nl),  
KvK (Chamber of Commerce) 30242945 Bankaccount number 1442.41.226 (IBAN NL68RABO0144241226, BIC RABONL24), Taxnumber NL0435.91.176





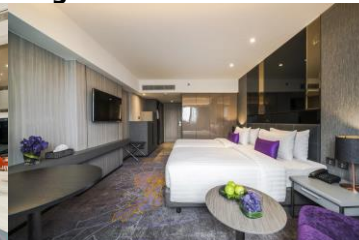
#### Verve Bangkok

4\*

THB 3.500

Thong Lo 300 mtr

[Web Verve Bangkok](#)



A LIVELY NEW HOTEL TRADITION IN THONG LO. Hotel Verve brings a spirited blend of modern Asian style and time-honored service excellence to one of Bangkok's best addresses. Hotel Verve is located on Sukhumvit Soi 55 (Thong Lo), only 300 meters from the hotel to BTS Sky Train-Thong Lo Station where you are able to access to major tourist destinations.

A striking new look retains elements of the hotel's history and heritage yet within a fully updated environment. Taking inspiration from Japanese architectural and interior components as well as other contemporary Asian motifs, designers have created a more open setting to complement Hotel Verve's cozy, home-like atmosphere. New focal points include pebble gardens, interior flowing water features, wall murals depicting mountain vistas and sun-ray scenes, along with beguiling art objects such as raindrop-shaped lamps. All design elements bring the outdoors inside and contribute to a sense of calm and spaciousness throughout Hotel Verve's rooms and facilities.

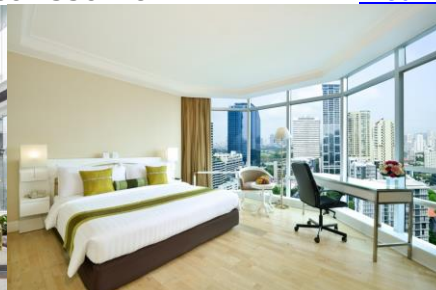
#### Windsor Suites & Convention

4\*

THB 3.100

Asok 550 mtr

[Web Windsor](#)



Hotel Windsor Suites & Convention, 456 rooms all suites and 20 function rooms

A modern city hotel in Sukhumvit Road, best location in center of business on Sukhumvit main street, Surrounding with shopping mall and Benjasiri public park as well as entertainment venue and Bangkok nightlife. 7 minutes' walk to BTS sky train and MRT subway station, 25 minutes to BITEC, only 40 minutes' drive to Suvarnabhumi Airport.

### Hospitality form VICTAM and Animal Health and Nutrition Asia 2020, by VICTAM & VIV (11 from 11)

BTC Group, Kerklaan 9, 3941 HT Doorn. Tel. +31.6 5799 6282, mail [info@btcgroun.nl](mailto:info@btcgroun.nl), web [www.btcgroup.nl](http://www.btcgroup.nl), KvK (Chamber of Commerce) 30242945 Bankaccount number 1442.41.226 (IBAN NL68RABO0144241226, BIC RABONL24), Taxnumber NL0435.91.176